

Quick Installation Guide

Z-Wave USB Dongle

1. Please plug in the **Z-Wave USB Dongle** to the USB port on PC and It will be detected automatically.
2. When the “**Found New Hardware Wizard**” screen appears, please choose” **no, not this time**” and click **Next**.
3. To insert the Z-Wave USB Dongle software installation CD into the CD-Rom of your computer, and click “**Install the software automatically**”
4. The Z-Wave USB Dongle driver will install automatically and click “**Finish**” to complete the installation.
5. The New Hardware Wizard of USB serial port will show up. Please follow the installation of USB serial converter to install the driver of USB serial port.

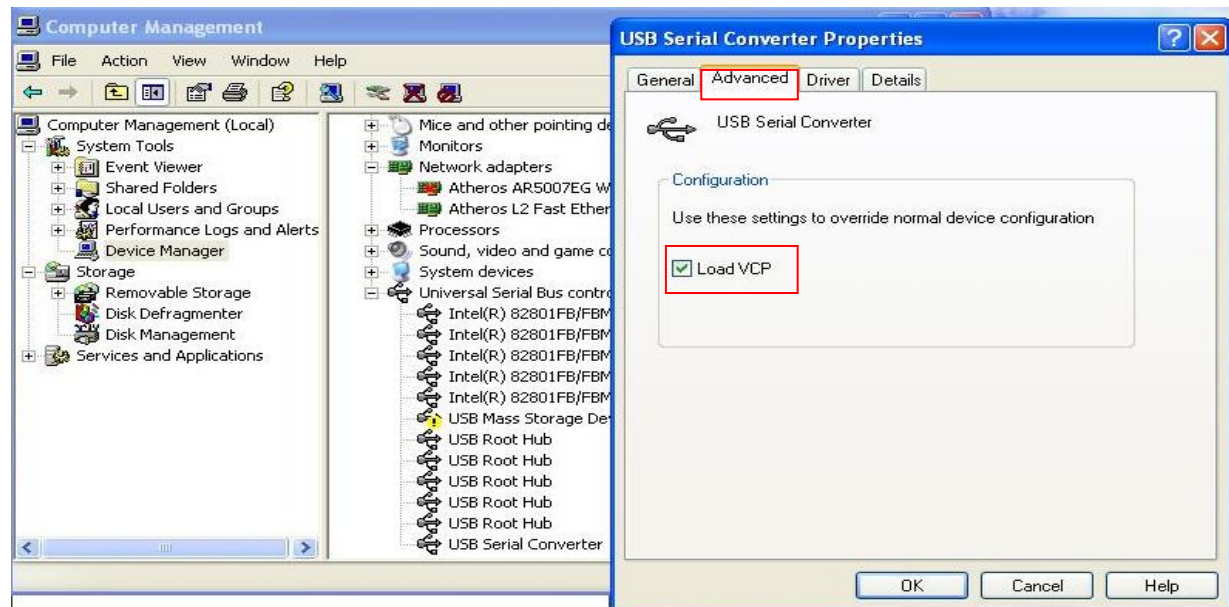
Verifying the Driver Installation on Windows 2000/XP

To verify your **Z-Wave USB Dongle** installation, please launch **Device Manager** by the steps below :

Right-click the My Computer icon on the desktop and select Properties > System > (Hardware) > Device Manager. > Universal Serial Bus Controllers > USB Serial Converter > Advanced.

Please select the Configuration of Load VCP.

If there is a question or exclamation mark next to that item, then the driver is not properly installed. Please delete the item, unplug the adapter and repeat the installation steps.



This **Quick Installation Guide** describes only the basic instructions on installation. For more information, please refer to the **User's Manual** on the provided CD-ROM